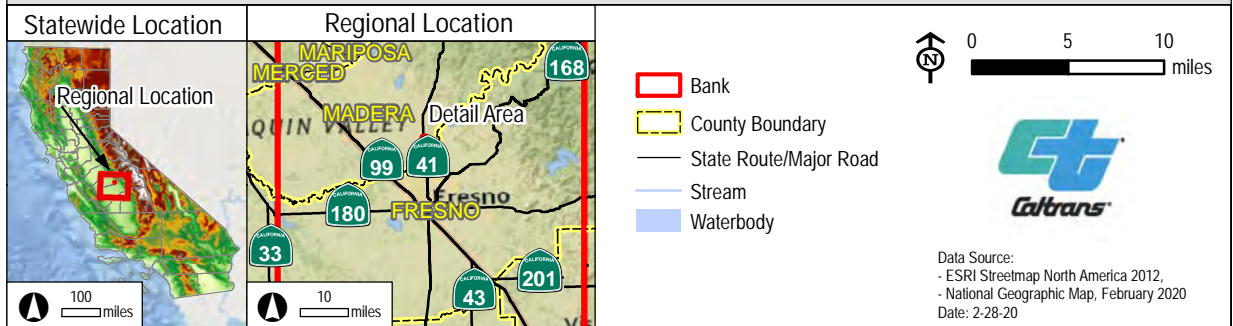
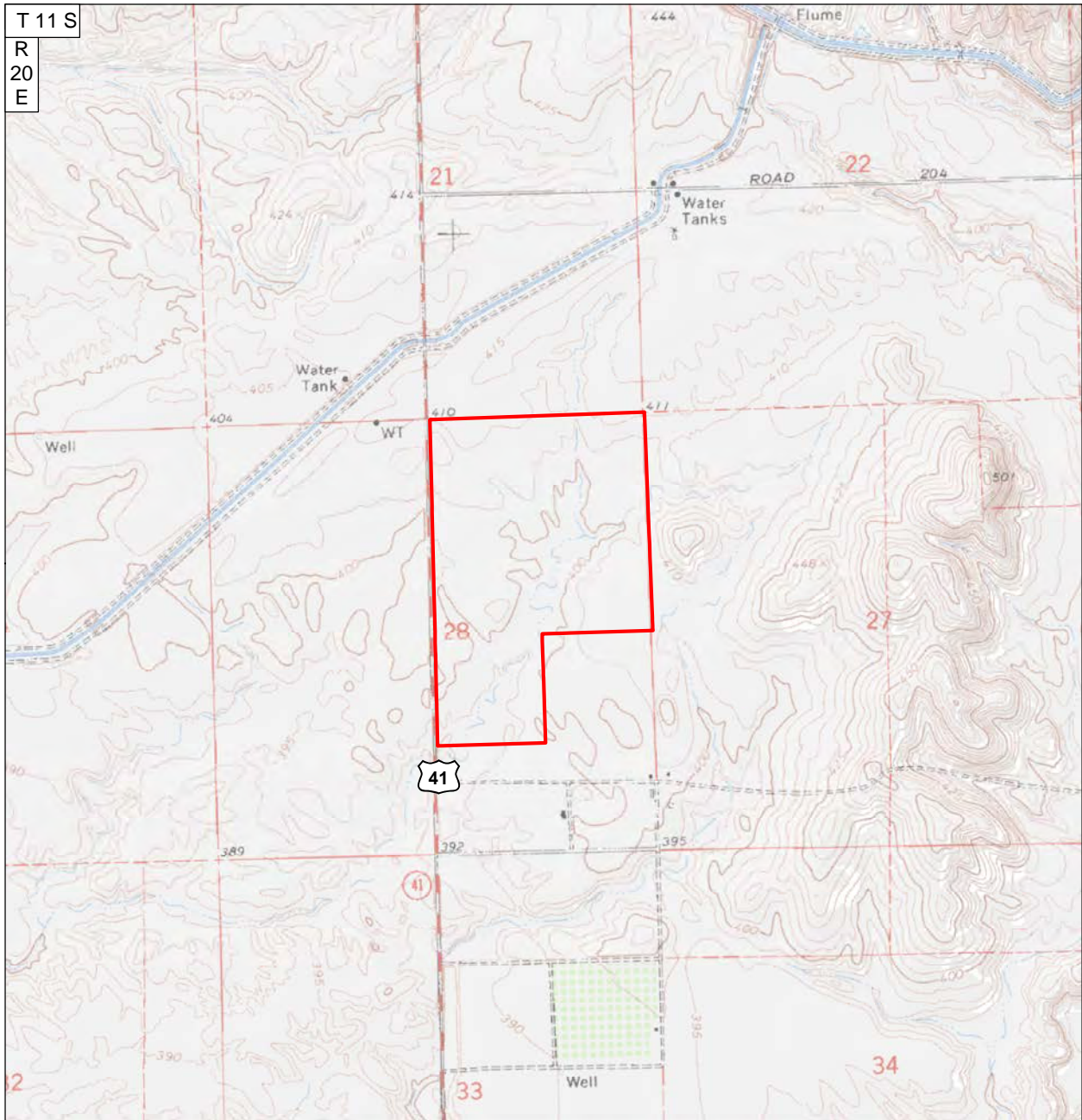


CALTRANS MADERA POOLS MITIGATION BANK



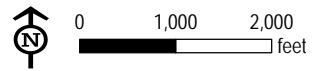
\\AWE\GIS\Desktop\AWE\16-003-001 Madera Pools\mxd\Prospectus\MP Figure 1.mxd

**Figure 1.**  
**Regional Location**



CALTRANS MADERA POOLS MITIGATION BANK

 Bank



The Bank is located in southern, central Madera County, north of Fresno.  
The Bank encompasses approximately 198 acres.

The Bank is located on the Lanes Bridge USGS 7.5-minute quadrangle map.  
The Bank occurs within Township 11 South and Range 20 East in Sections 28.

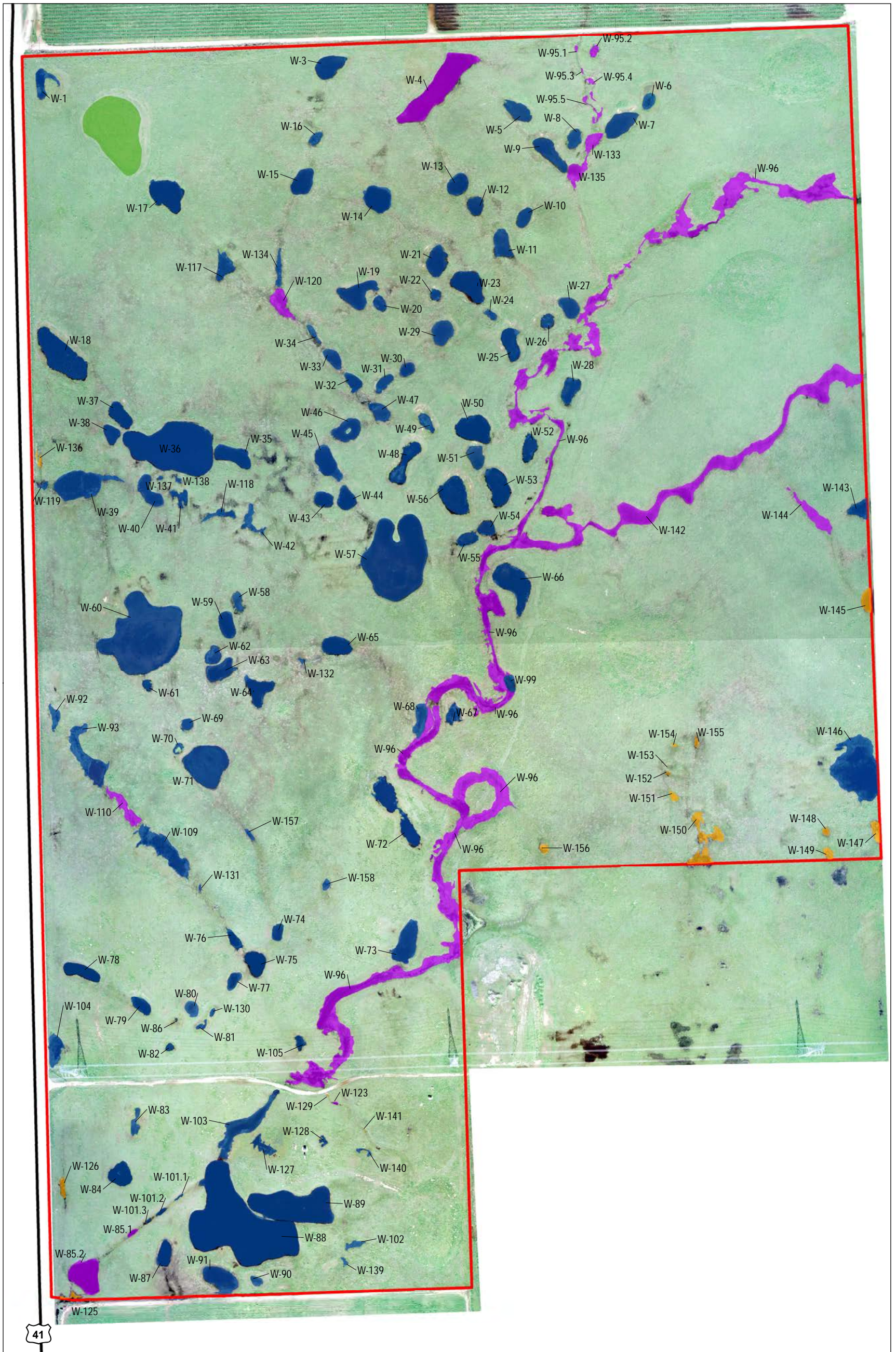
Center coordinates for the Bank are:  
WGS84 Latitude 35.723345, Longitude -119.570494  
UTM Zone 11N NAD83 Northing 3956310m, Easting 267496m

Data Source:  
- ESRI ArcGIS Online, USGS and  
©2013 National Geographic Society

Date: 2-28-20

\\AVE\GIS\Desktop\AWE\116-003-001 Madera Pools\mxd\Prospectus\MP Figure 3.mxd

**Figure 3.**  
**USGS Map**



CALTRANS MADERA POOLS MITIGATION BANK

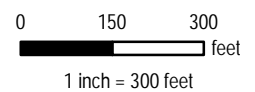
- Delineation Study Area
- State Route 41
- Non-aquatic Feature Containing Spiny-seeped button celery - (0.717 acre)

- Aquatic Feature Classification**
- Seasonal Pool (0.340 acre)
  - Vernal Pool (13.428 acres)
  - Vernal Swale (5.540 acres)



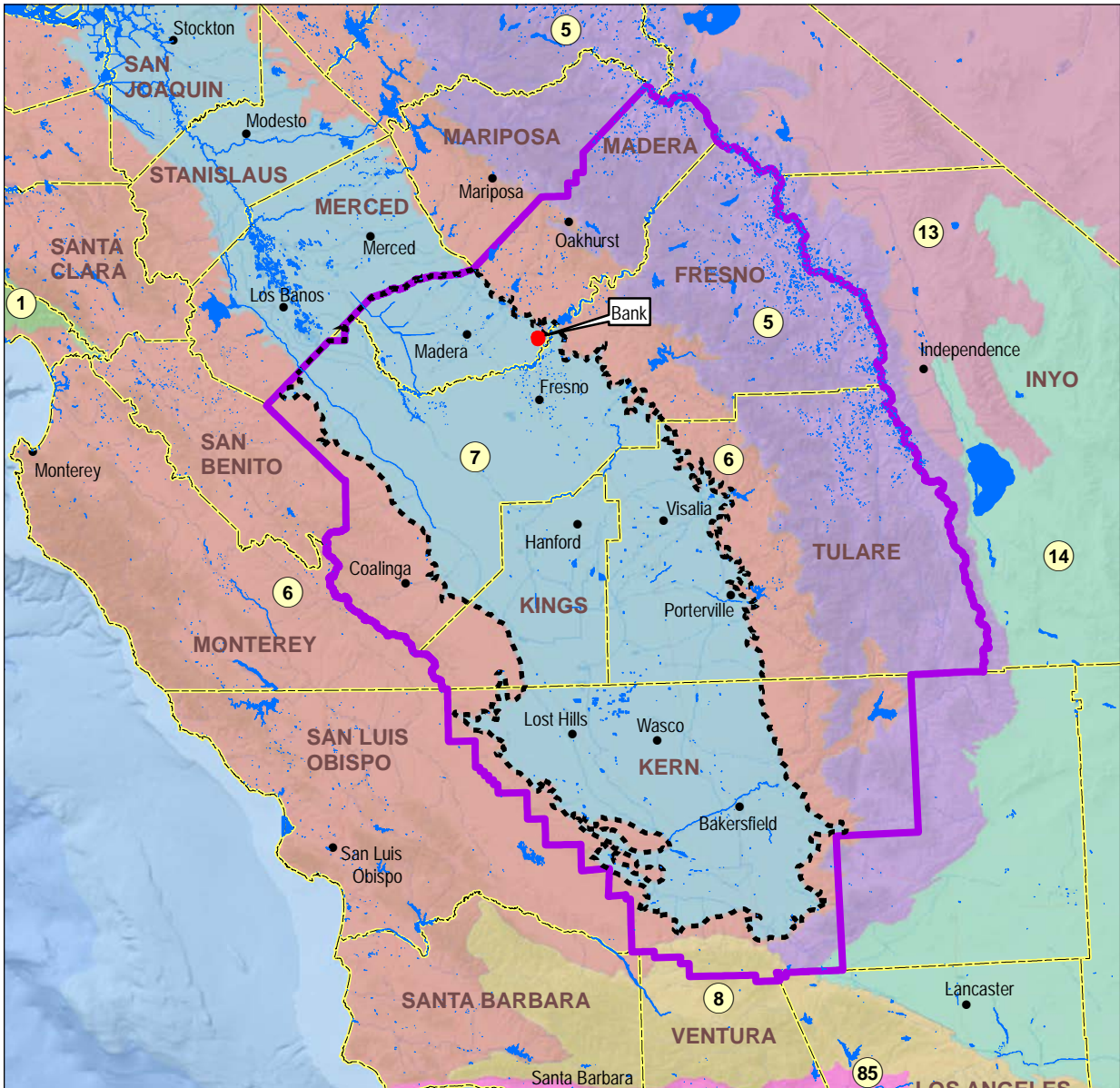
Data Source:  
 - Aerial Imagery, Caltrans, February 14, 2017  
 - Caltrans 2017 (USACE Verified 2018)

Date: 2-28-20

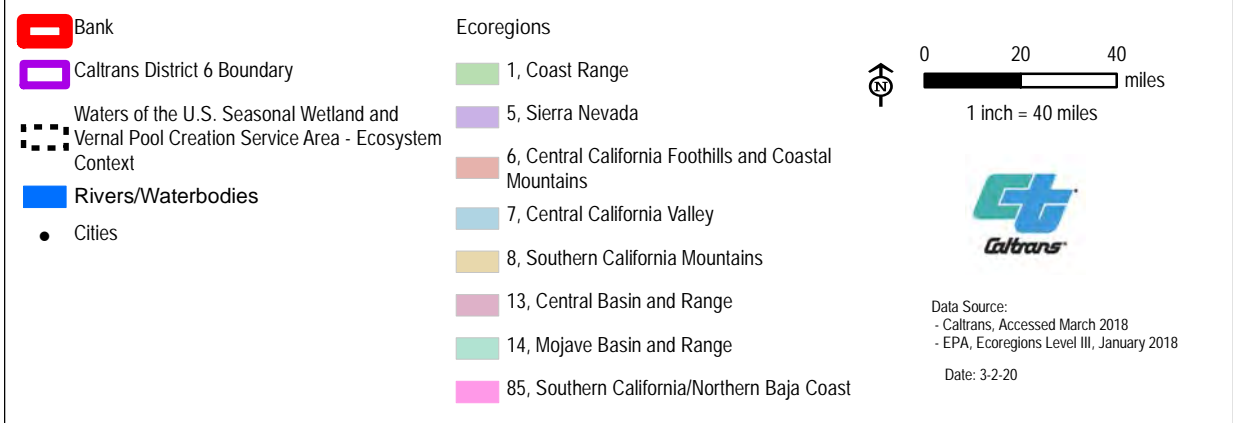


\\AVE\GIS\Disktop\AVE\16-003-001\Madera Pools\madrProspectus\MP Figure 20 old data.mxd

**Figure 20.**  
**2018 Verified Aquatic Resources**



CALTRANS MADERA POOLS MITIGATION BANK



\\WVE\GIS\Desktop\AWE16-003-001 Madera Pools\mxd\Prospectus\MP Figure 30.mxd

**Figure 31.**  
**Wetlands Service Area**